

MAKING A GREAT FIRST IMPRESSION

COMFORTABLE

- No gooey mess associated with impression materials
- Breathe and swallow as you normally would
- No unpleasant taste or smell

FAST

- View 3D scans onscreen with your dentist immediately
- Faster delivery times of your personalized Invisalign[®] treatment plan

ACCURATE

- Allows for a precise fit of crowns, bridges, implants, and Invisalign clear aligners and retainers
- Eliminates the need to retake impressions

.....

No Goop. No Gag. No Worries!



For Dental Patients

.....

YOU DON'T HAVE TO BE PRONE TO GAGGING TO HATE THE OLD GOOP-FILLED DENTAL IMPRESSION TRAYS.

Even under the best of conditions, traditional impressions were still uncomfortable, occasionally unreliable and unpleasant tasting. That's why we're proud to offer goop-free, full digital impressions with the revolutionary iTero® Element™ Scanner.

Not only is a digital impression more comfortable, it's also much more accurate. The scanner takes an incredibly detailed impression of your teeth and gums. Once the scan is complete, your dentist will then have a 3D model of your mouth that can be used to create detailed crowns, bridges, implants, and Invisalign® clear aligners and retainers. This digital accuracy eliminates the need to retake impressions, keeping your time in the chair to an absolute minimum.

THE WAND

Your dentist uses the iTero Element Scanner's wand to capture images of your tooth surfaces and gum tissue.



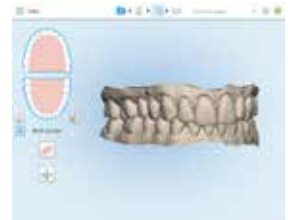
THE SCAN

You and your dentist can follow the scanning progress on the screen.



THE 3D MODEL

The completed scan is available as a 3D model that your dentist can use to begin planning your Invisalign treatment.



THE INVISALIGN OUTCOME SIMULATOR

Visualize how your teeth may look after Invisalign treatment. Seeing the "end result" before you decide can take the guesswork out of your decision and put you on the path to the smile you've always wanted.

